



LADDER ANCHOR

ERG100

Kit included

- 1 x Ergoniks Anchor Point (2 pieces)
- 2 x Ergoniks Ladder Yokes
- 2 x Ergoniks Adjustable Ladder Straps

Additional Kit Required

- 1 x Grabo Pro Lifter 300

thegrabo.co.uk/product/grabo-pro
or use the QR code on the right





User and Assembly Instructions

Please Read Carefully

1

Check the area for GRABO PRO suitability following guidance on surface types and wet conditions in the GRABO operator's manual.
(use QR code)



2

Position the GRABO PRO in a stable location to secure your ladder. This should be placed between the ladder and the structure it is leaning against, aligned with the ladder. Position it either on the wall below waist height or on the ground, as close to the wall as possible.

3

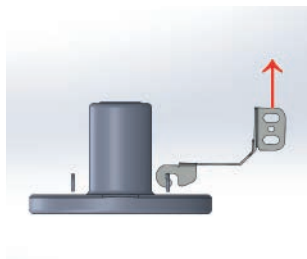
Switch on the GRABO PRO Pro using the on/off switch and press it firmly against the surface. Press the green motor power button; the run status indicator will flash red as a seal is formed. Once the maximum negative pressure is reached, the indicator will turn green, and the motor will stop automatically. When set to KG, the display should read 170 KG.

4

After securing the anchor point, attach a ladder yoke by looping it around both sides of the ladder, just above the 6th rung. Connect the karabiners to the rings. Repeat the process with a second ladder yoke, placing it just above the 2nd rung.

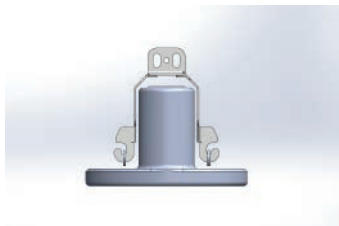
5

Holding one of the two Ergoniks Anchor Point components horizontally (Ergoniks logo face down), insert the two hooks into the attachment rings on one side of the GRABO PRO, and rotate the component to a vertical position ensuring the hooks are fully engaged into the attachment rings.



6

Perform the same with the second component on the attachment rings on the other side of the GRABO PRO. Both components should now be parallel, and the anchor attachment holes at the top of each component should line up. Repeat this process with the second component on the opposite side of the GRABO PRO. Ensure both components are parallel, with the anchor attachment holes aligned at the top.



7

Clip the karabiner of an adjustable ladder strap through one of the elongated holes at the top of the Ergoniks Anchor Point. Ensure that both components are now securely locked together by the karabiner and cannot detach from the attachment rings. Attach the other end of the adjustable ladder strap to the centre ring of the upper ladder yoke.

8

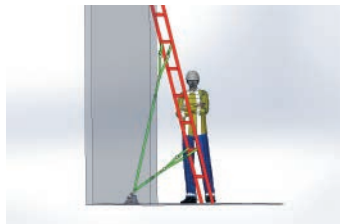
Using a second adjustable ladder strap, secure one end to the Ergoniks Anchor Point by placing the karabiner through the other elongated hole at the top of the anchor point and run the strap to the ladder yoke, securing the other karabiner through the middle ring on the lower ladder yoke.

9

Attach one end of a second adjustable ladder strap to the Ergoniks Anchor Point by clipping the karabiner through the remaining elongated hole. Run the strap to the lower ladder yoke and secure the other karabiner to its centre ring.

10

Make sure all straps are tightened and secure and check the GRABO PRO is still sealed. Neatly organise any loose straps to avoid trip hazards.



Ladder Anchor Best Practice

Work area safety

Always do a risk assessment on the site before setting up.

If anchoring on the ground or on the wall below waist height, the top of the ladder should be suitably secured and stabilised.

The GRABO, Ergoniks Anchor Point and straps/yokes have not been tested against every type and make of ladder. Please ensure you have undertaken testing for your specific ladders and equipment before using.

The GRABO can work on many different surfaces which makes it versatile in the field, however it performs best on non-porous and flat surfaces. Do not use the GRABO beyond the capabilities and uses stated in user manual.

Do not use the GRABO on surfaces with visible puddles of water, on hollow-type surfaces, or on flexible sheets. Thin sheets can bend and flex beyond the limit of the material or the GRABO, causing it to detach.

It is down to the user to ensure that the GRABO has properly adhered to the surface. Please be aware of the substrate of the material you are adhering to.

When using the GRABO as a ladder anchor, the holding force will not be any greater than the adhesive force between the surface that the GRABO is adhered to and the substrate (e.g. render to a wall), or the weight of the material that the GRABO is attached to (e.g. a single loose-laid paving slab).

The GRABO's pump produces an audible sound when running. While maintaining a vacuum, it will activate as needed to sustain suction. If the pump runs continuously without stopping, try placing the GRABO on a different surface area, as it may not be achieving proper suction.

Do not use the GRABO if the battery is low. It is recommended that the battery has a minimum of 60% charge prior to each use as a ladder anchor. Frequently check the display during use to ensure that the GRABO has sufficient charge to complete the task.

Before every use, always check all components of the GRABO, Ergoniks Anchor Point, straps/yokes and connections and **DO NOT USE** if there is any sign of wear or damage. Ensure the kit is all checked and signed off before use according to your company's policies.

Any misuse or substitution of components from the list above, cannot guarantee safe operation of the equipment.

Personal safety

Before use ensure you have your company's permission to use this device and have been fully trained to your company standards. Make sure you have familiarised yourself with the GRABO and attachments for use as a ladder anchor.

Ensure you wear suitable PPE and fall restraint gear applicable to the job.

Procedures for the safe use of ladders are still fully applicable when using the GRABO and Ergoniks Anchor Point.

Contact for further queries and support

Exordia Global Ltd

01245 961166

info@exordia-global.com







www.ergoniks.co.uk